



**SEGi**  
University &  
Colleges

---

# PSYCHOLOGY

/saɪˈkɒl.ə.dʒi/ **noun**

---

1. Accredited programmes from Malaysia and UK
2. Designed and taught by practicing psychologists and researchers
3. Bringing industry into the classroom

Collaboration with



### Programme accreditations and recognitions



MINISTRY OF HIGHER EDUCATION



# ONE OF THE LARGEST & LEADING 47 YEARS AT

ONE OF THE ONLY 24 QS 5-Stars Rated University in the World



Teaching



Internationalisation



Online Learning



Arts & Culture



Employability



Academic Development



Bachelor of Medicine and  
Bachelor of Surgery (MBBS)



Inclusiveness



# NG HIGHER EDUCATION GROUP IN MALAYSIA T THE FOREFRONT OF EDUCATION

KOTA DAMANSARA | KUALA LUMPUR | SUBANG JAYA  
PENANG | KUCHING | IPOH | JOHOR BAHRU | SIBU

Quality education accredited and assured by the Malaysian Ministry of Education and other organisations



Partner Universities and Institutions

# YOUR GATEWAY TO LEADING GLOBAL INSTITUTIONS

Consortium of Global Research and Mobility Partners


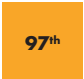


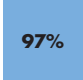
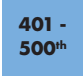



# BRINGING THE WORLD TO YOU GLOBAL PARTNERING UNIVERSITIES



## University of Greenwich (UoG), UK





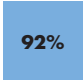

2024 - 2025

	<b>691 - 700<sup>th</sup></b>	WORLD UNIVERSITY RANKINGS		<b>97<sup>th</sup></b>	EUROPE UNIVERSITY RANKINGS NORTHERN EUROPE			
	<b>501 - 600<sup>th</sup></b>	WORLD UNIVERSITY RANKINGS		<b>89<sup>th</sup></b>	IMPACT RANKINGS		<b>97%</b>	INTERNATIONAL OUTLOOK SCORING
	<b>301 - 400<sup>th</sup></b>	BUSINESS & ECONOMICS SUBJECT RANKING		<b>401 - 500<sup>th</sup></b>	SOCIAL SCIENCES SUBJECT RANKING		<b>501 - 600<sup>th</sup></b>	EDUCATION SUBJECT RANKING
	<b>601 - 800<sup>th</sup></b>	COMPUTER SCIENCE SUBJECT RANKING						



## University of Hertfordshire (UH), UK




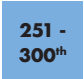
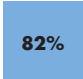
2024 - 2025

	<b>851 - 900<sup>th</sup></b>	WORLD UNIVERSITY RANKINGS		<b>129<sup>th</sup></b>	EUROPE UNIVERSITY RANKINGS NORTHERN EUROPE			
	<b>601 - 800<sup>th</sup></b>	WORLD UNIVERSITY RANKINGS		<b>201 - 250<sup>th</sup></b>	YOUNG UNIVERSITY RANKINGS		<b>92%</b>	INTERNATIONAL OUTLOOK SCORING
	<b>65<sup>nd</sup></b>	COMPUTER SCIENCE LEAGUE TABLE						



## University of Central Lancashire (UCLan), UK

2024 - 2025

	<b>951 - 1000<sup>th</sup></b>	WORLD UNIVERSITY RANKINGS		<b>135<sup>th</sup></b>	EUROPE UNIVERSITY RANKINGS NORTHERN EUROPE			
	<b>201 - 300<sup>th</sup></b>	IMPACT RANKINGS		<b>251 - 300<sup>th</sup></b>	YOUNG UNIVERSITY RANKINGS		<b>82%</b>	INTERNATIONAL OUTLOOK SCORING
	<b>601 - 800<sup>th</sup></b>	BUSINESS & ECONOMICS SUBJECT RANKING						

# LEARN UNDER THE BIGGEST & BRIGHTEST FROM THE INDUSTRY

To excel in your career from day one, you need cross-disciplinary skills, industry insights, and technical know-how. These are often not adequately provided by traditional education methods like written assignments, industry visits, or internships.

Our programmes integrate industry expertise directly into the classroom experience. Co-designed, co-delivered, and co-assessed by industry professionals, our programmes offer hands-on learning opportunities with over 300 partner brands. The aim is to ensure you have real-world experience and secure job or business opportunities before graduation.



Winner of the  
**Employers' Choice Award**  
by Talentbank for  
TWO CONSECUTIVE YEARS





# CONSORTIUM OF INDUSTRY PARTNERS



# WHY STUDY PSYCHOLOGY WITH SEGi?



Psychology at Greenwich is ranked World Top 201-250. (2023, Times Higher Education Rankings - Psychology Rankings)



Psychology at Greenwich is ranked 38th for Graduate Prospects and 55th for Research Quality in the UK. (2024, Complete University Guide)



Taught by research-active staff who are experts in their fields.



Our programme is deeply rooted in industry engagement, providing you with hands-on experiences that bridge the gap between theory and practice. Collaborate with leading professionals, work on real-world projects, and gain insights into various sectors where psychology plays a pivotal role.



Supports learning with lectures and seminars. Seminars enable students to discuss and develop their understanding of topics covered in lectures in smaller groups. Some modules are conducted through combined seminars with UK students. This promotes students' understanding of psychology in a local and international context.



A British Psychological Society accredited curriculum that will help prepare students for a variety of career pathways. The British Psychological Society is a registered charity that acts as the representative body for psychology and psychologists in the UK, and is responsible for the promotion of excellence and ethical practice in the science, education, and application of the discipline.





# YOUR WORK EXPERIENCE COUNTS!

SHORTEST & FASTEST PATHWAY FOR ADULT LEARNERS



## SKIP ENTRY REQUIREMENTS: DIRECT ENTRY PATHWAY

Can't meet the entry requirements? APEL.A is the preferred alternative pathway to qualify yourself for a programme.



## STUDY FIRST AND GET AUTOMATICALLY QUALIFIED LATER

Start studying first and you will automatically be qualified once you pass more than 50% of the subjects.



## SHORTEN YOUR STUDY DURATION

Cut your studying duration up to 50% using your experience from work & training!



## GET A QUALIFICATION WITHOUT STUDYING

Convert your work experience into a fully recognised qualification.

CANNOT COMMIT FOR A FULL-FLEDGED PROGRAMME?

# "ALA-CARTE" YOUR EDUCATION

## BUILD YOUR QUALIFICATION SUBJECT BY SUBJECT

Not ready to take on a full-fledged programme? Enrol in 1 subject as a micro-credential first. Accumulate the subjects over time and stack them up to become a full-fledged qualification.

PROFESSIONAL PROGRAMMES

**4** MICRO-CREDENTIAL SUBJECTS

DEGREE/DIPLOMA

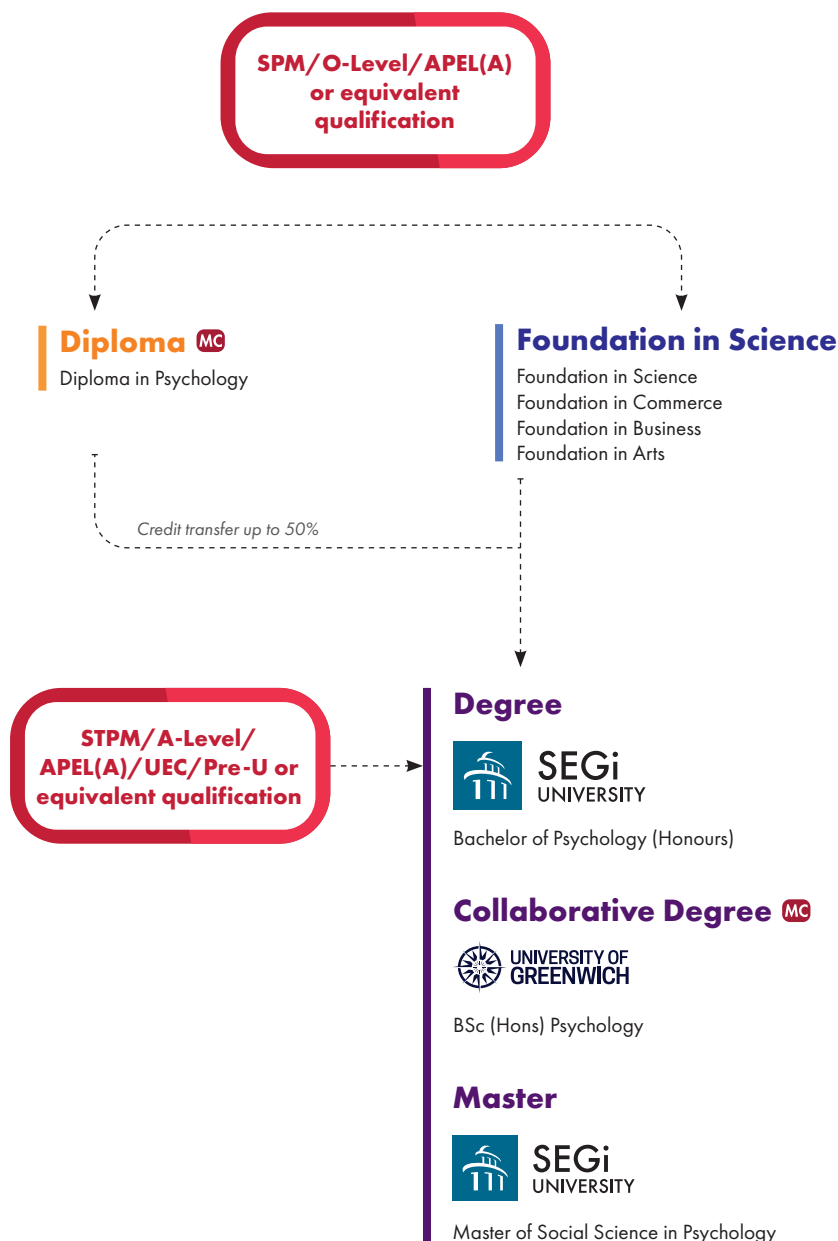
**6** PROFESSIONAL PROGRAMMES

# QUALITY EDUCATION WITHIN REACH

## PROGRAMMES THAT SUITS YOUR NEEDS

Mode of Study	Full time	Programme is offered in full time mode
	Weekend	The weekend programme is also designed to suit adult learners to complete within the shortest timeframe possible
	ODL	Open and Distance Learning (ODL) mode is a fully-online learning mode suited to students who wishes to study off-campus
	WBL	Work-Based Learning (WBL) is an innovative mode of delivery where SEGi partners with a renowned brand to deliver the programme. Students get the best of both worlds in their studies – theoretical know-how from SEGi and practical learning from the industry
Micro-credentials	MC	Micro-credentials are designed for students who wish to 'ala carte' their education. Subjects are offered on a singular basis and are stackable over time to convert into a full-fledged qualification
APEL	APEL A/M/C	Developed by the Malaysian Qualifications Agency (MQA), the Accreditation of Prior Experiential Learning (APEL) programme enables students to access multiple pathways into a recognised programme
	APEL Q	The APEL.Q programme enables students to convert work experience into a recognised qualification without going through the conventional teaching and learning of a programme
Mobility	Mobility	Students are eligible to study in another SEGi campus for 1 semester without additional cost to their tuition fee
	Global Mobility	Students are eligible to transfer to our partnering universities for mobility programmes
Funding	PTPTN Assistance	A dedicated PTPTN Assistance office to help students secure PTPTN fundings
	EPF-Claimable	Students/guardians can withdraw from the EPF to fund their/their children's studies
	PTPTNX'tra	PTPTNX'tra helps cover the remaining shortfall that is not covered by PTPTN. Students can effectively pay nothing until they graduate and enjoy an education loan with a minimal interest rate of 1%
	EduFlex	Designed for Adult Learners, students can leverage on our education loan with a minimal 4% interest
	0% Installment	We offer a 0% interest monthly instalment plan, so that you don't have to break the bank.
	HRDC-Claimable	All our programmes are claimable under HRD Corp

# STUDY ROUTE



## Credit Transfer

Your previous studies and qualifications may earn you credits towards your diploma or degree. The award of credits is given on the basis of subject mapping and grades achieved. The maximum transferable credits you may earn for a previous academic qualification could be 50% of the total credits for the Bachelor’s degree. Work experience, MOOCs and other training qualifications may earn you credit transfers of up to 30%. All credit transfers are subject to approval by the Senate or Academic Board.

## <sup>MC</sup> Micro-credential

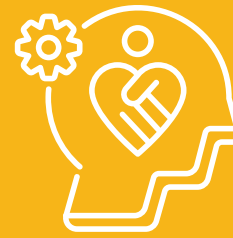
We break it down to build you up. SEGi’s Micro-credentials are unbundled from accredited qualifications, offering the modern learners a tempting, tantalising buffet-style learning model. While traditional diplomas or degrees are well-structured and solid, SEGi’s Micro-credentials offer learners the choice of ultimate flexibility and customisation, empowering learners to select only what they want to consume, experience and learn. Through our innovative curriculum framework, these unbundled courses delivered through micro-credentials can then be easily rebundled into accredited and recognised qualifications.

# BRANCHES OF P



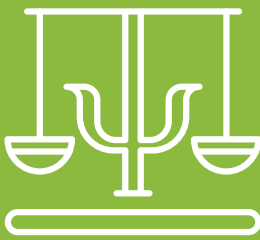
## Developmental / Child Psychology

Developmental Psychology is the study of human growth (physical, mental, emotional, etc.) from young to old. In addition, this subject will teach about special-needs individuals such as those with autism and attention-deficit hyperactivity disorder (ADHD) so that students will understand the differences between healthy individuals and special-needs individuals. Job opportunities: special-needs educators, social workers. Relevant fields for post-graduate studies: Child Psychology, Developmental Psychology, Applied Behaviour Analysis.



## Abnormal Psychology

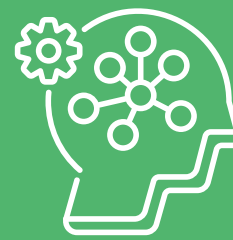
Abnormal Psychology is the study of unusual behaviours and focuses on mental illnesses such as depression and post-traumatic stress disorder (PTSD). At the degree level, students will understand the fundamentals of different types of mental illnesses. To practise as clinical psychologists, a Master's Degree in Clinical Psychology is required.



## Forensic Psychology

Forensic psychology explains different types of criminal behaviour from various psychological perspectives, the role of forensic psychology practitioners and criminal justice institutions in the rehabilitation and punishment of offenders, and how these processes may vary for certain categories of offender. Job opportunities: Forensic Psychology students need at least a Master's or a PhD to work as a forensic psychologists or researchers.

Relevant fields for post-graduate studies: Criminal Psychology, Forensic Psychology, Law.



## Cognitive Psychology

Cognitive Psychology is the study of how the human mind works. Topics such as attention, perception, memory and problem-solving, are covered. Job opportunities: To practise as neurofeedback\* therapists, students need at least a Master's or a PhD to work in cognitive psychology.

Relevant fields for post-graduate studies: Cognitive Psychology, Neuroscience, Cognitive Behaviour Therapy.

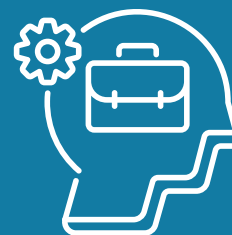
\*During a neurofeedback session, the therapist uses EEG to record brainwaves and makes suggestions to change a particular behaviour based on the results of the machine.

# PSYCHOLOGY



## Clinical Psychology

Clinical psychology is a branch of psychology concerned with the assessment and treatment of mental illness, abnormal behaviour, and psychiatric problems. This field integrates the science of psychology with the treatment of complex human problems, making it an exciting career choice for people who are looking to work in a challenging and rewarding field.



## Industrial / Organisational Psychology

Industrial / Organisational psychology is a branch of psychology that applies psychological theories, methods and research into understanding and improving workers, workplaces, and an organisation's productivity and well-being. Other similar terms are occupational psychology, work psychology, work and organisational psychology, managerial psychology, management psychology, personnel psychology, consumer psychology, engineering psychology, business psychology, human resource management, and organisational behaviour.



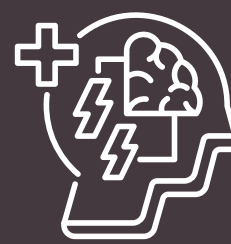
## Counselling Psychology

Counselling psychology is a branch of psychology that applies psychological theories, methods and research in working collaboratively with clients across a diverse range of human problems such as vocational selection, school problems, drug abuse, and marital conflict. In contrast to clinical psychologists, counselling psychologists often work with clients who are experiencing less severe symptoms. Other related terms are guidance and counselling.



## Educational Psychology

Educational psychology is a branch of psychology that applies psychological theories, methods and research in understanding and improving how humans learn in educational settings, the effectiveness of educational interventions, the psychology of teaching, and the social psychology of schools as organisations. Another related term is school psychology.



## Neuropsychology

Neuropsychology is a branch of psychology that applies psychological theories, methods and research in the assessment and treatment of behaviour directly related to brain function. Other related terms are neuroscience and cognitive neuropsychology, and clinical neuropsychology.

# PROGRAMME MATRIX

Programme	Awarding Institution	Entry Requirements	Campus
Master of Social Science in Psychology <small>KD [N/0313/7/0016][07/29][MQA/PA 17449]</small>		<ul style="list-style-type: none"> <li>A Bachelor's degree in Psychology (Level 6, MQF) with a minimum CGPA of 2.50 or its equivalent as accepted by the HEP Senate; OR</li> <li>A Bachelor's degree in Psychology with a minimum CGPA of 2.00 and not meeting a CGPA of 2.50, can be accepted subject to rigorous internal assessment. OR</li> <li>Candidates with a Bachelor's degree (non-psychology, Level 6, MQF) with a minimum CGPA of 2.50 with a minimum 45 credits of prerequisites modules in Psychology or a graduate diploma in Psychology or its equivalent as accepted by the HEP Senate OR</li> <li>Candidates with a Bachelor's degree (non-psychology, Level 6, MQF) with a minimum CGPA of 2.50 and a Master's degree in Psychology with a minimum 45 credits of prerequisites modules in Psychology * or a graduate diploma in Psychology or its equivalent as accepted by the HEP Senate OR</li> <li>Other relevant equivalent qualifications recognised by Malaysian government as equivalent to the above requirements.</li> </ul>	Kota Damansara
Bachelor of Psychology (Honours) <small>KD [N/311/6/0114] [03/27][MQA/PA13378]</small>	SEGi University	<ul style="list-style-type: none"> <li>A pass in STPM with a minimum of Grade C (GP 2.00) in any two (2) subjects;</li> <li>A pass in STAM with a minimum grade of Jayyid;</li> <li>A Certificate in Matriculation or Foundation with a minimum CGPA of 2.00 out of 4.00;</li> <li>A Diploma (Level 4, MQF) in any field with at least CGPA of 2.00 out of 4.00;</li> <li>A Diploma Kemahiran Malaysia (DKM) / Diploma Lanjutan Kemahiran Malaysia (DLKM) / Diploma Vokasional Malaysia (DVM) subjected to HEP Senate / Academic Board's approval. The HEPs are required to conduct screening and provide appropriate bridging courses in Mathematics and Science;</li> <li>An Advanced Diploma (Level 5, MQF) in the relevant fields with at least CGPA of 2.00 out of 4.00;</li> <li>Other relevant equivalent qualifications recognised by Malaysian government as equivalent to the above requirements, and requirement accepted by the HEP Senate/competent authority in Malaysia. For International Students</li> <li>Attain an IELTS score of 5.0/ CEFR B1 OR equivalent to TOEFL PBT (410-413) OR TOEFL IBT (34) OR CAE (160) (Cambridge English: Advance)/ CEFR B2 OR CPE (180) (Cambridge English: Proficiency)/ CEFR C1 OR PTE (Pearson Test of English) (36) OR MUET (Malaysian University English Test) Band 3</li> </ul> <p><i>"Those without a pass/credit in Mathematics and/or Biology/ Physics/ Chemistry/ General Science/ Applied Science at SPM level or equivalent can be admitted but are required to attend special enhancement course(s). These special enhancement courses should be SPM equivalent, remedial in nature. Students must pass/credit the Mathematics and Biology/ Physics/ Chemistry/ General Science/ Applied Science enhancement courses as a prerequisite to related core courses taught in English." (Program Standard, p 66) "</i></p>	Kota Damansara
BSc (Hons) Psychology <small>SJ [R/0313/6/0020][06/29][MQA/FA11475]</small>	University of Greenwich, UK	Entry into the first year (Level 4): <ul style="list-style-type: none"> <li>STPM (grade profile CC) and minimum SPM English grade 1A/2A (or SEGi English Placement Test, Band 4) with at least a credit for SPM Maths and SPM Science</li> <li>Successful completion of Senior Middle UEC with a minimum pass average of 60% and minimum UEC English grade A1-C8 (or SEGi English Placement, Band 4)</li> <li>Matriculation or Foundation or equivalent (minimum CGPA 2.0 out of 4.0), with at least a credit for SPM Maths and SPM Science and SEGi English Placement Test, Band 4</li> <li>Diploma or equivalent (minimum CGPA 2.0 out of 4.0), with at least a credit for SPM Maths and SPM Science and SEGi English Placement Test, Band 4 OR Entry into the second year (Level 5):</li> <li>Psychology Diploma from SEGi (2.5 years duration), minimum CGPA 2.0, and IELTS 6.0 with a minimum of 5.5 in each skill OR minimum SPM English grade 1A/2A or SEGi English Placement Test, Band 4</li> </ul>	Subang Jaya

Programme	Awarding Institution	Entry Requirements	Campus
<b>Diploma in Psychology</b> KD (N/0313/4/0003)(07/28) (MQA/FA16719) SJ (R3/0313/4/0021)(07/28)(A8786) FG (N/311/4/0128) (12/26) (MQA/FA15092) SWK (R2/311/4/0085) (01/27) (MQA/FA1374)	SEGi College	<ul style="list-style-type: none"> <li>• SPM with a minimum of THREE (3) credits in any subject and a pass in Mathematics and Biology/ Physics/ Chemistry/ General Science/ Applied Science; OR</li> <li>• A pass in Sijil Tinggi Persekolahan Malaysia (STPM) with a minimum of Grade C (GP 2.00) in any subject and a pass in Mathematics and Biology/ Physics/ Chemistry/ General Science/ Applied Science; at SPM level; OR</li> <li>• A pass in Sijil Tinggi Agama Malaysia (STAM) with a minimum grade of Maqbul and a pass in Mathematics and Biology/ Physics/ Chemistry/ General Science/ Applied Science at SPM level; OR</li> <li>• A Certificate (Level 3, MQF) in the relevant fields with at least a CGPA of 2.00 and a pass in Mathematics and Biology/ Physics/ Chemistry/ General Science/ Applied Science at SPM level; OR</li> <li>• A pass in SKM Level 3, MQF in the relevant fields (Note: The HEPs are required to conduct screening and provide appropriate bridging courses in Mathematics and Biology/ Physics/ Chemistry/ General Science/ Applied Science); OR</li> <li>• Other equivalent qualifications recognized by the Government of Malaysia</li> </ul>	Kota Damansara Subang Jaya Penang Sarawak
<b>Foundation in Commerce</b> KL (R2/010/3/0258) (02/25) (A5212)	SEGi	<ul style="list-style-type: none"> <li>• SPM / O-Level or equivalent with 5 credits</li> <li>• UEC with 3 credits</li> </ul>	Kuala Lumpur
<b>Foundation in Business</b> SWK (R3/010/3/0418) (10/26) (A7097)			Sarawak
<b>Foundation in Arts</b> KD(R2/010/3/0406)(07/26)(MQA/FA0193) SJ (R2/010/3/0541) (07/26) (MQA/FA0452)			Kota Damansara Subang Jaya
<b>Foundation in Science</b> KD (R2/010/3/0356)(07/25)(MQA/A4432) SJ (R2/000/3/0021) (04/23) (A7755)			Kota Damansara Subang Jaya

## ENGLISH REQUIREMENTS\*

Types of Exam	Diploma	Degree	Master
IELTS	Band 5.5	Band 6.0	Band 6.5
TOEFL iBT	42	46	60
Cambridge English	154	160	169
Pearson Test	47	51	59
Linguaskill Cambridge	154 - 161	169 - 175	176 - 179
MUET	Band 2	Band 3	

\*The English requirement serves as a guideline and it is subject to change. The weightage requirement may vary for different programmes.

## ENTRY REQUIREMENTS FOR INTERNATIONAL STUDENTS



[bit.ly/isentry23](https://bit.ly/isentry23)

### A pathway for everyone

Your prior-qualifications were not mentioned?  
Did not meet the entry requirements?

When there is a will, there's always a way. Contact us and schedule a FREE one-on-one consultation session to plot out a customised pathway that will fit your needs.



# THE MOST VERSATILE

## PSYCHOLOGY POST-GRAD DEGREE

- 3 electives to choose from
- Contemporary subjects
- Diverse career pathways



## MASTER OF SOCIAL SCIENCE IN PSYCHOLOGY

KD [N/0313/7/0016][07/29][MQA/PA 17449]

The Master of Social Science (M.Soc.Sc.) in Psychology programme offers a comprehensive and modern curriculum, equipping students with advanced skills and knowledge.

The course places strong emphasis on Research Methodology and Statistics, ensuring proficiency in data analysis and interpretation. Cutting-edge courses in advanced and emerging areas such as Digital Technologies in Psychology and Psychology of Entrepreneurship & Innovation prepare students for the future of the field. Ethical considerations are addressed through dedicated coursework in Ethics in Psychology. Students explore Advanced Cognitive Psychology and Personality Development and Assessment. Unique modules like Psychology of Life Coaching and Mentoring equip students for diverse career paths. The programme also includes Social and Cultural Psychology, enhancing understanding of psychological principles in diverse contexts.

It culminates in a comprehensive research project, providing practical experience and enhancing research skills. APEL A entry recognises students' prior work and life experiences for admission, and the curriculum incorporates industry experience, offering practical knowledge and real-world insights through internships and collaborations with leading organisations.



**SEGi**  
UNIVERSITY

### Programme Modules

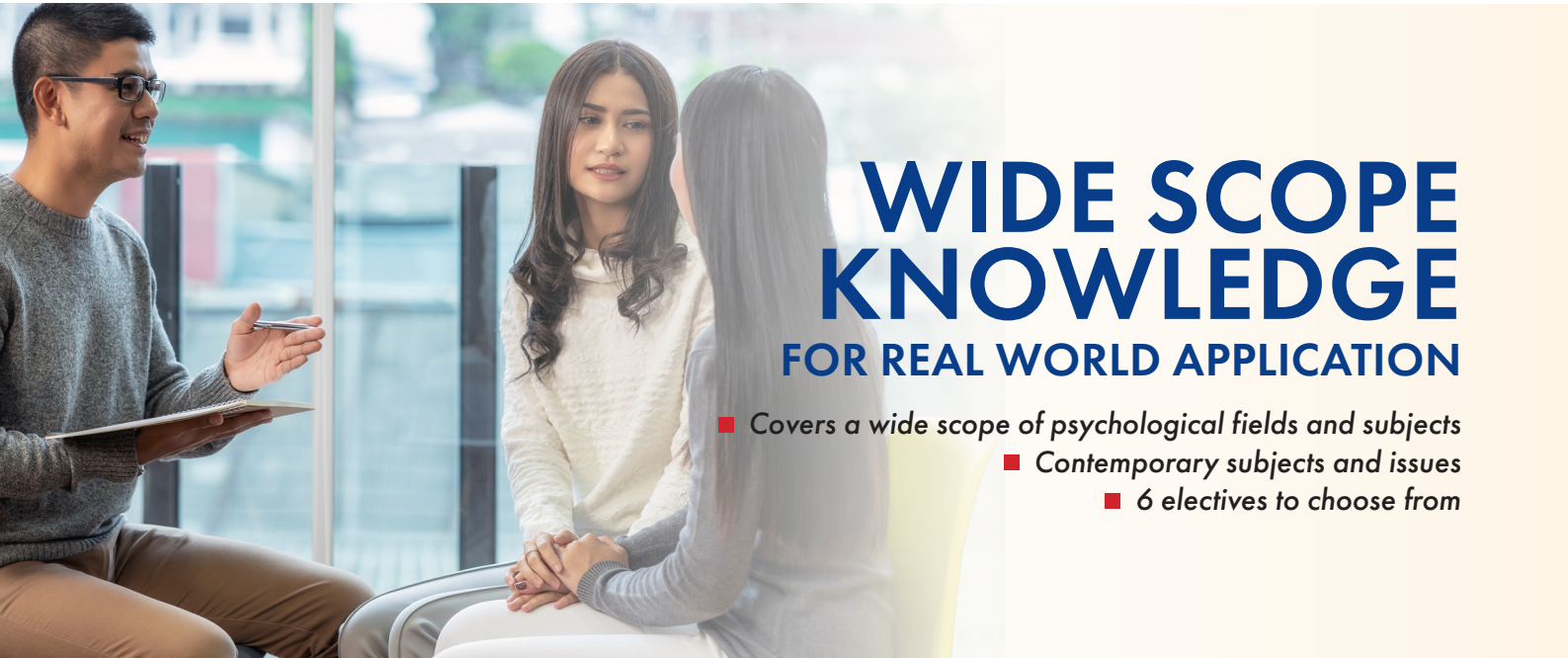
- Psychometric and Psychological Assessment
- Digital Technologies in Psychology
- Ethics in Psychology
- Advanced Cognitive Psychology
- Personality Development and Assessment
- Research Methodology
- Research Statistics
- Psychology research project

### Electives (choose 1)

- Psychology of Life Coaching and Mentoring
- Psychology of Entrepreneurship & Innovation
- Social and Cultural Psychology

### Career Opportunities

- Educational Psychologist
- Industrial-Organizational Psychologist
- Research Scientist
- Life Coach and Mentor
- Psychometrician
- Entrepreneurship and Innovation Consultant
- Social and Cultural Psychologist
- Digital Health Specialist
- Ethics Consultant



# WIDE SCOPE KNOWLEDGE FOR REAL WORLD APPLICATION

- Covers a wide scope of psychological fields and subjects
- Contemporary subjects and issues
- 6 electives to choose from

## BACHELOR OF PSYCHOLOGY (HONOURS)

KD [N/311/6/0114](03/27)(MQA/PA13378)

MICRO-CREDENTIALS

APEL A/M/C

MOBILITY



SEGi  
UNIVERSITY

### Programme Modules

#### Year 1

- English 1
- English 2
- Information Technology and Systems
- Personal Development and Communication Skills
- Introduction to Psychology
- History of Psychology
- Biological Psychology
- Lifespan Development
- Elementary Statistics
- Introduction to Applied Psychology

#### Year 2

- Research Methodology 1: Quantitative Methods
- Research Methodology 2: Qualitative Methods
- Ethics in Psychology
- Psychology of Learning
- Abnormal Psychology
- Counselling Psychology
- Cognitive Psychology
- Personality Psychology
- Entrepreneurship
- Elective 1

#### Year 3

- Child Psychology
- Educational Psychology
- Clinical Psychology
- Social Psychology
- Final Year Project
- Industrial Training
- Elective 2
- Elective 3

#### Electives (Choose 3 only)

- Cross-cultural Psychology
- Criminal Psychology
- Cyberpsychology
- Substance Abuse
- Industrial-organisational Psychology
- Psychology Seminar

#### MPU

- Falsafah dan Isu Semasa (Local and International)
- Penghayatan Etika dan Peradaban (Local) / Bahasa Melayu Komunikasi 2 (International)
- Bahasa Kebangsaan A (for students with no SPM Credit) / Effective Listening
- Integrity and Anti-Corruption
- Co-curriculum: Sustainability Thinking

#### Mode of Study

- Full time
- Weekend
- Open and Distance Learning

#### Career Opportunities

- Human resource executive
- Special needs therapist/ shadow aide for special education
- Corporate trainer
- Market researcher
- General manager
- General administrator
- Early childhood practitioner/ child development consultant
- Social worker
- Academic tutor
- Marketer/sales executive
- Entrepreneur
- Advertising and public relations consultant
- Recruitment consultant

\* For Malaysian students who do not have a credit in SPM BM

# BSC (HONS) PSYCHOLOGY (3+0)

SJ (R/0313/6/0020)[06/29][MQA/FA11475]

FULLY ACCREDITED

MICRO-CREDENTIALS

APEL A/M/C

MOBILITY

## Programme Modules

### Year 1

- Introduction to Psychology (Part A)
- Research Methods in Psychology One (Part A)
- Introduction to Applied Psychology (Part A)
- Academic Skills for Psychology
- Introduction to Psychology (Part B)
- Research Methods in Psychology One (Part B)
- Introduction to Applied Psychology (Part B)
- The Psychology of Resilience and Success
- Falsafah dan Isu Semasa (Local students)
- Bahasa Melayu Komunikasi 2 (International students)
- Penghayatan Etika dan Peradaban (Local students)
- Penghayatan Etika dan Peradaban / Falsafah dan Isu Semasa (International students)

### Year 2

- Brain and Behaviour
- Developmental Psychology
- Psychopathology and Clinical Psychology
- Psychological Research Methods
- Entrepreneurship / Personal Health Management
- Cognitive Psychology and Neuroscience
- Social Psychology
- Personality and Individual Differences
- Research Statistics for Psychology
- Elective (Choose one of the following):
  - Organisational Psychology
  - Health Psychology
  - Counselling Theories and Techniques
- Work Placement 1

### Year 3

- Psychology Project (Part A)
- Applied Positive Psychology
- Psychology and Neuroscience: Trends and Issues
- Child Psychology and Education
- Public Speaking / Bahasa Kebangsaan A\*
- Psychology Project (Part B)
- Adult Development and Mental Health
- Social Forensic Psychology
- Clinical Child and Adolescent Psychology
- Community Service
- Work Placement 2

### MPU

- Falsafah dan Isu Semasa (Local and International)
- Penghayatan Etika dan Peradaban (Local) / Bahasa Melayu Komunikasi 2 (International)
- Bahasa Kebangsaan A (for students with no SPM Credit) / Effective Listening
- Integrity and Anti-Corruption
- Co-curriculum: Sustainability Thinking

### Mode of Study

- Full time
- Weekend

### Career Opportunities

As Psychology graduates, you will be well-prepared for careers in forensic, education, health, occupational, counselling, clinical psychology, teaching, media and advertising, market research, human resource, business, marketing and sales, and social sciences.

\*For Malaysian students who do not have a credit in SPM BM

## LEARN AT THE FOREFRONT OF PSYCHOLOGY

- *Designed and delivered by active researchers and experts*
- *Distinct focus on research (being the foundation for Postgrad)*
- *Contemporary subjects and syllabus*





# BUILDING A STRONG FOUNDATION IN PSYCHOLOGY

- Practical assignments and learning
- Distinct focus on positive psychology
- Covering a wide range of contemporary subjects

## DIPLOMA IN PSYCHOLOGY

KD (N/0313/4/0003)[07/28] (MQA/PA16719) • SJ (R3/0313/4/0021)[07/28][A8786] • PG (N/311/4/0128) (12/26) (MQA/PA15092) • SWK (R2/311/4/0085) (01/27) (MQA/FA1374)

FULLY ACCREDITED

MICRO-CREDENTIALS

APEL A/M/C

MOBILITY

### Programme Modules

#### Year 1

- Applied Digital Skills
- General Psychology
- Orientation to Psychology
- Cyberpsychology
- General Language Training
- Penghayatan Etika dan Peradaban / Bahasa Melayu Komunikasi 1 (International students)
- Inclusion in Early Childhood
- Developmental Psychology
- Human Resource Management
- Growth Mindset / Bahasa Kebangsaan A\*
- Motivation and Emotions
- Social Psychology
- Cognitive Psychology
- History of Psychology

#### Year 2

- Positive Psychology
- Personality Psychology
- Basic Statistics
- Co-Curriculum: Sustainability Thinking
- Forensic Psychology
- Biological Psychology
- Educational Psychology
- Introduction to Research Methods in Psychology
- Integrity and Anti-Corruption
- Abnormal Psychology
- Ethics in Psychology
- Counselling Psychology
- Health Psychology
- Industrial and Organisational Psychology
- Psychological Testing



**SEGi**  
COLLEGE

### Mode of Study

- Full time
- Weekend

### Career Opportunities

Pursue career options as a psychologist or consultant in rehabilitation centres or in the area of social service. Alternatively, you can pursue employment in the fields of education & training, consultancy, sales and marketing, human resource and marketing research.

\*For Malaysian students who do not have a credit in SPM BM

## FOUNDATION IN SCIENCE

KD (R2/010/3/0356)(07/25)(MQA/A4432); MQA/FA14176 N-DL/010/3/0024

### Programme Modules

#### Year 1

- Chemistry 1
- Mathematics 1
- Chemistry 3
- Mathematics 3
- Academic English
- Computer Application
- Chemistry 2
- Mathematics 2
- Elective 1\*
- Elective 2\*
- Elective 3\*
- Elective 4\*
- Elective 5\*

### Elective (by Specialisation)\*

#### General

- Biology 1
- Physics 1
- Biology 2
- Physics 2
- Physics 3

#### Health Sciences

- Biology 1
- Public Speaking
- Biology 2
- Information Technology
- Introduction to Patient Care

#### Engineering

- Physics 1
- Public Speaking
- Physics 2
- Information Technology
- Physics 3

- \* Electives are subject to change without prior notice.
- \* Students intending to articulate into the Health Sciences degree programmes will have a choice to take either General or Health Sciences Pathway.
- \* Students intending to articulate into Engineering degree programmes will have a choice to take either General or Engineering Pathway.

## FOUNDATION IN SCIENCE

SJ (R3/000/3/0021) (04/28) (A7755)

### Programme Modules

- Chemistry I
- Mathematics I
- Physics I
- Biology I
- English I
- Chemistry II
- Mathematics II
- Physics II
- Basic Information and Communication Technologies (ICT)
- English II
- Chemistry III
- Engineering Mathematics
- Physics III
- Biology II
- Biochemistry
- Thinking Skills

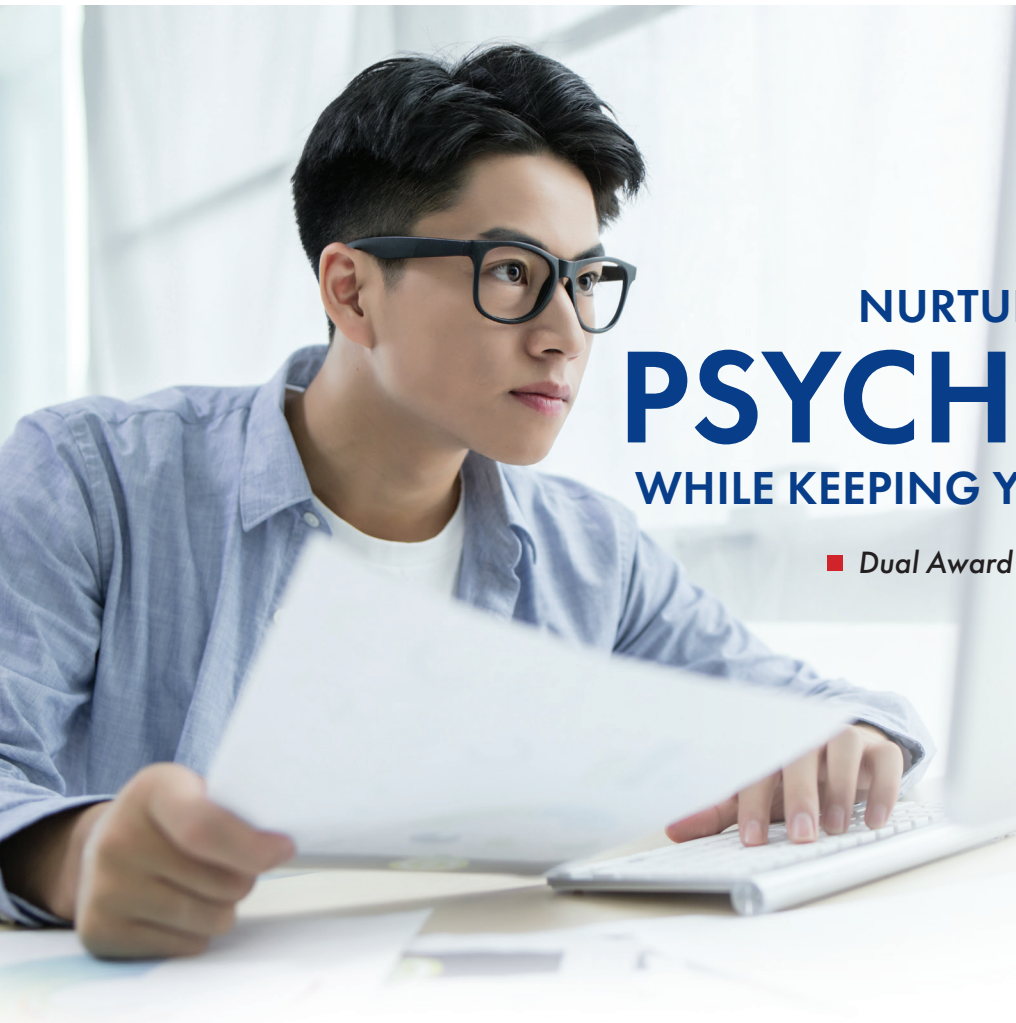
### Why study this programme?

This qualification is specially designed for students with SPM, O-Level or equivalent qualifications. Upon successful completion of this programme, students may enrol in a range of health sciences or degree programmes engineering.

# FASTEST PATHWAY TO A DEGREE

- Discover your passion in Psychology while keeping your options open
- Fastest pathway into a wide variety of Degree Programmes
- Build a strong foundation in Science





# NURTURE YOUR PASSION IN PSYCHOLOGY WHILE KEEPING YOUR OPTIONS OPEN

- Dual Award option with University of Greenwich
- Covers a diverse field of business

## FOUNDATION IN COMMERCE

KL (R2/010/3/0258) (02/25) (A5212)

### Programme Modules

#### Year 1

- Quantitative Methods I
- Accounting I
- English I
- Computer Application
- Introduction to Business
- Accounting II
- Principles of Economics
- English II
- Quantitative Methods II
- Personal and Professional Development
- Principles of Marketing
- Quantitative Methods III
- Accounting III
- Business Mathematics

Dual Award\*



**SEGi**  
COLLEGE



**UNIVERSITY OF  
GREENWICH**

\* Terms & Conditions apply

### Why study this programme?

The Foundation provides you with a perspective on management accounting, essential for management and operating decisions, with the knowledge and skills gained.

# FOUNDATION IN ARTS

KD [R2/010/3/0406][07/26][MQA/FA0193]; MQA/PA4175 N-DL/010/3/0025

## Programme Modules

### Semester 1

- General Language Training
- Computer Application
- Introduction to Business
- Mathematics
- Statistics
- Academic English
- Public Speaking
- Critical Thinking Skills
- Principles of Economics
- Elective 1
- Elective 2
- Elective 3
- Elective 4
- Elective 5

## Electives

### Business & Accounting

- Introduction to Financial Accounting
- Fundamental of Management
- Intercultural Communication
- Information Technology
- Introduction to Marketing

### Communication Studies/ English & PR

- Interpersonal Communication
- Intercultural Communication
- Fundamental Photography
- Information Technology
- Introduction to Marketing

### Information Technology

- Programming Methodology
- Interpersonal Communication
- Fundamental of Management
- Intercultural Communication
- Information Technology

### Quantity Survey/Hospitality/ Education/Psychology

- Information Technology
- Interpersonal Communication
- Fundamentals of Management
- Introduction to Marketing
- Intercultural Communication

### Creative Design/ Architecture/ Interior Architecture

- Colour & Form
- Drawing Fundamentals
- Fundamental Photography
- Intercultural Communication
- Interpersonal Communication

# FOUNDATION IN ARTS

SJ [R2/010/3/0541][07/26][MQA/FA0452]

## Programme Modules

### Year 1

- Thinking Skills
- English I
- Mathematics
- Basic Information and Communication Technologies (ICT)
- Introduction to Psychology
- Essentials of Economics
- English II
- Introduction to Law
- Introduction to Sociology
- Co-curriculum
- Introduction to Management
- Writing and Research Skills
- Electives (Choose any two):
  - Introduction to Finance
  - Introduction to Visual Arts
  - Introduction to Mass Media and Communication
  - Introduction to Legal Skills

### Why study this programme?

This qualification is specially designed for students with SPM, O-Level or equivalent qualifications and who would like to pursue a bachelor's degree at the university. Upon successful completion of the Foundation in Arts programme, students may further their studies in a wide range of degree programmes depending on units completed during their studies. Students may be eligible to apply for advanced standing.

# A FOUNDATION WITH THE WIDEST PATHWAYS

- Dual Award option with University of Greenwich
- Fastest pathway into a wide variety of Degree Programmes
- 4 electives to choose from





**SEGi University** (100589-U)

☎ 603 6145 1777 ☎ 011 1501 8838

**SEGi College Kuala Lumpur** (42114-V)

☎ 603 2070 2078 ☎ 012 988 7482 ☎ 1800 88 8028

**SEGi College Subang Jaya** (284515-V)

☎ 603 8600 1777 ☎ 010 313 0303

**SEGi College Penang** (187620-W)

☎ 604 263 3888 ☎ 013 629 4880

**SEGi College Sarawak** (172726-T)

☎ 6082 252 566 ☎ 017 859 2566 ☎ 1300 88 7344

**SEGi University Regional Centre, Johor Bahru**

☎ 607 235 9188 ☎ 010 313 0303

**SEGi Admissions and Support Centre, Ipoh**

☎ 016 212 9736

The best in you, made

**POSSIBLE**

The information in this brochure is correct at the time of printing (Aug 2024).  
Changes may be made without prior notice. Copyright 2024. All rights reserved.

[segi.edu.my](http://segi.edu.my)

Chat with us today!  
**SCAN HERE**

